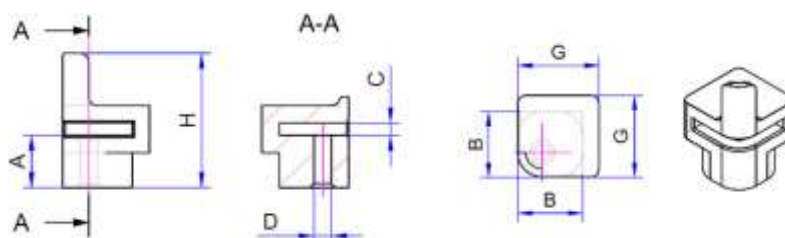


PCB CORNER ELEMENT WITH DRILLED HOLE

Series: EEB



- **Material:** TPE (Thermoplastic elastomer)
- **Colour:** black
- **Hardness:** Approx. 65 Shore A
- **Temperature Range:** -40 to +100°C.
- **Fire Resistance:** UL 94-V-0.
- **Typical applications include** CCTV systems, surgical equipment, robots, automotive electronics and computer hardware.



Part Number	A	B	C	D	G	H
EEB-16-50	5.0	1.0	11.1	3.8	10.0	14.4
EEB-16-60	6.0	8.0	1.4	2.0	10.0	15.4
EEB-16-80	8.0	8.0	1.4	2.0	10.0	17.4
EEB-16-100	10.0	8.0	1.4	2.0	10.0	19.4

Dimensions in mm

EEB	16	50
Part number series	Thickness of PCB (1.6mm)	Dimension A (5mm)

Mounting Guidance